

Description

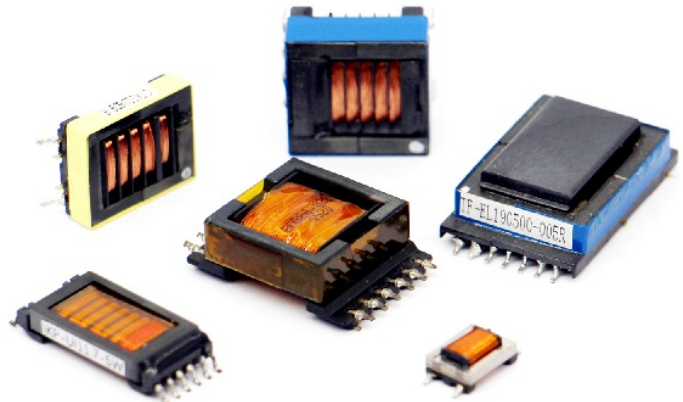
- Transformers for use in CCFL power supplies, available in through-hole and surface mount recess or gull wing versions, incorporating floating or fixed secondary technology
- Supply output current up to 30 milli-Amps
- Frequency range from 40 to 80 KHz
- Deliver output power from 2.5 to 14 Watts
- Operate in royer and other topologies
- Ferrite core material

Applications

- CCFL power supplies

Environmental Data

- Storage temperature range: -40°C to +85°C
- Operating ambient temperature range: 0°C to +70°C
- Solder reflow temperature: +260°C max. for 10 seconds max.



Packaging

- Supplied in bulk packaging

Part Number	Schematic Diagram	Pout Watts	Lp μ H ¹	DCRp Ohms Max	DCRs Ohms Max	TR Ns/Np	Vpri Volts Max ²	Vsec Volts Max ²	Is Max A rms	Vpri Abnormal ³	Vsec Abnormal ³	Mechanical Dimensions	PCB Pad Layout
2.5 WATT VERSIONS													
CTX110652-R	A	2.5	43	0.220	285	67	20	1340	.005	30	2000	A	A
CTX110655-R	B	2.5	43	0.220	285	67	20	1340	.005	30	2000	A	A
CTX110657-R	B	2.5	26	0.212	285	86	15	1340	.005	23	2000	A	A
CTX110659-R	B	2.5	19	0.190	285	100	13	1340	.005	23	2000	A	A
CTX210652-R	A	2.5	43	0.220	285	67	20	1340	.005	30	2000	B	B
CTX210655-R	B	2.5	43	0.220	285	67	20	1340	.005	30	2000	B	B
CTX210657-R	B	2.5	26	0.212	285	86	15	1340	.005	23	2000	B	B
CTX210659-R	B	2.5	19	0.190	285	100	13	1340	.005	23	2000	B	B
4 WATT VERSIONS													
CTX210403-R	C	4	44	0.220	165	50	26	1340	.007	40	2000	C	C
CTX210407-R	C	4	27	0.160	220	86	15	1340	.007	23	2000	C	C
CTX210409-R	C	4	20	0.160	220	100	13	1340	.007	23	2000	C	C
CTX210411-R	C	4	20	0.160	330	125	10	1340	.007	16	2000	C	C
CTX310403-R	C	4	44	0.220	165	50	26	1340	.007	40	2000	D	D
CTX310407-R	C	4	27	0.160	220	86	15	1340	.007	23	2000	D	D
CTX310409-R	C	4	20	0.160	220	100	13	1340	.007	23	2000	D	D
CTX310411-R	C	4	20	0.160	330	125	10	1340	.007	16	2000	D	D
6 WATT VERSIONS													
CTX110600-R	D	6	44	0.160	176	67	20	1340	.011	30	2000	E	E
CTX110603-R	C	6	44	0.160	132	50	26	1340	.011	40	2000	E	E
CTX110605-R	C	6	44	0.160	176	67	20	1340	.011	30	2000	E	E
CTX110607-R	C	6	27	0.132	176	86	15	1340	.011	23	2000	E	E
CTX110609-R	C	6	20	0.132	176	100	13	1340	.011	23	2000	E	E
CTX110611-R	C	6	20	0.132	291	125	11	1340	.011	16	2000	E	E
CTX210600-R	D	6	44	0.160	176	67	20	1340	.011	30	2000	F	C
CTX210603-R	C	6	44	0.160	132	50	26	1340	.011	40	2000	F	C
CTX210605-R	C	6	44	0.160	176	67	20	1340	.011	30	2000	F	C
CTX210607-R	C	6	27	0.132	176	86	15	1340	.011	23	2000	F	C
CTX210609-R	C	6	20	0.132	176	100	13	1340	.011	23	2000	F	C
CTX210611-R	C	6	20	0.132	291	125	11	1340	.011	16	2000	F	C
14 Watt Versions													
CTX410805-R	E	14	24	0.030	262	67	20	1340	.030	30	2000	G	F
CTX410807-R	E	14	16	0.024	272	86	15	1340	.030	23	2000	G	F
CTX410809-R	E	14	16	0.024	314	100	13	1340	.030	23	2000	G	F

¹Inductances are nominal values

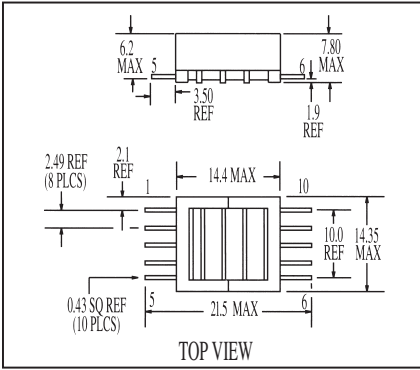
²Continuous RMS Voltage

³Maximum Instantaneous RMS Voltage

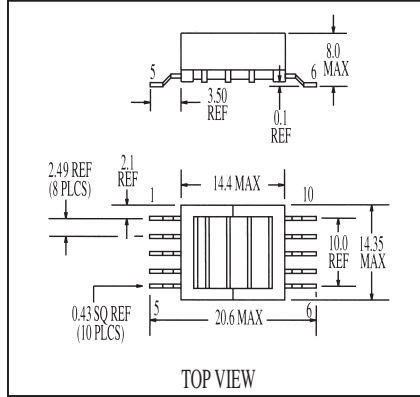
Mechanical Diagrams

2.5 Watt Versions

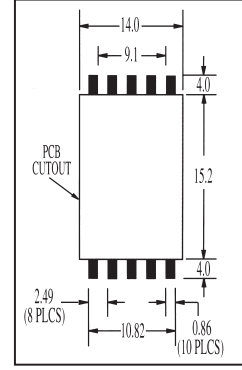
Mechanical A



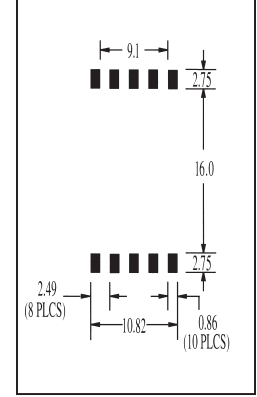
Mechanical B



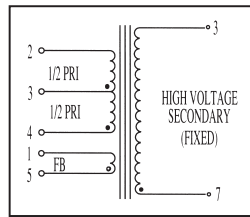
Pad Layout A



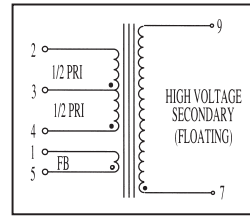
Pad Layout B



Schematic A



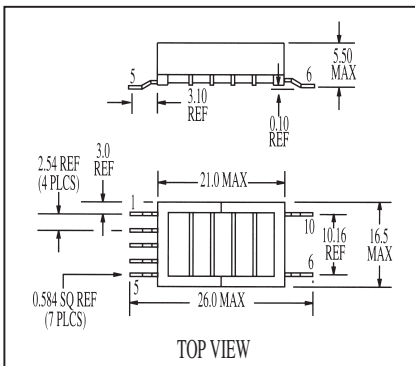
Schematic B



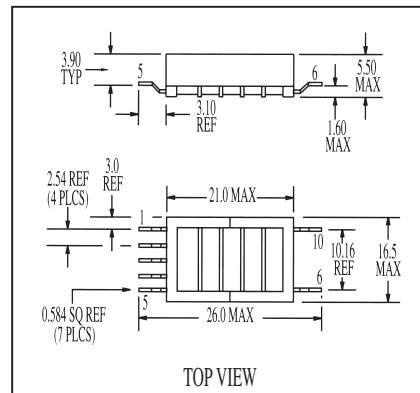
Dimensions are in millimeters

4 Watt Versions

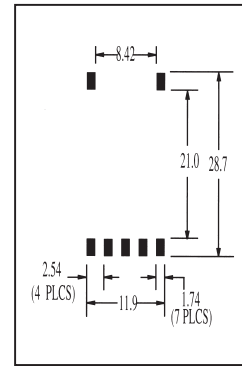
Mechanical C



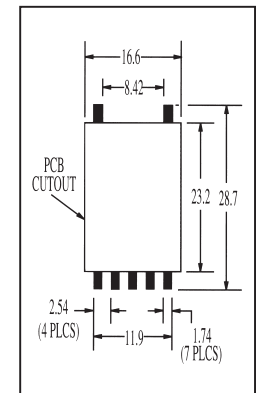
Mechanical D



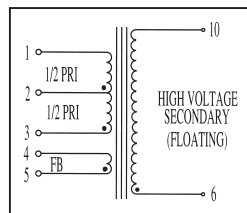
Pad Layout C



Pad Layout D



Schematic C

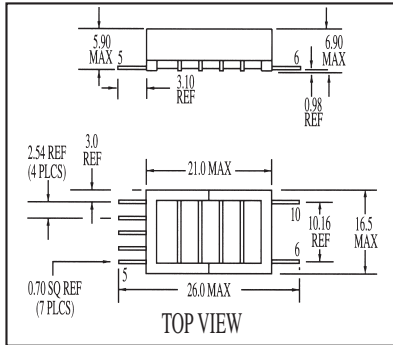


Dimensions are in millimeters

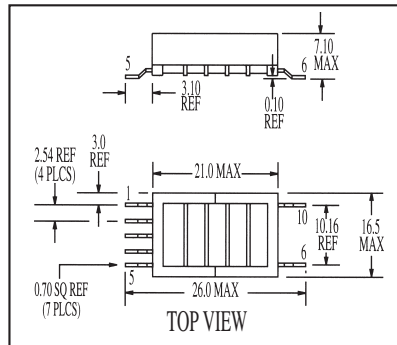
Mechanical Diagrams

6 Watt Versions

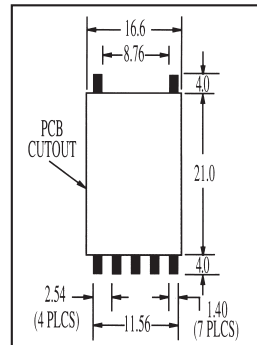
Mechanical E



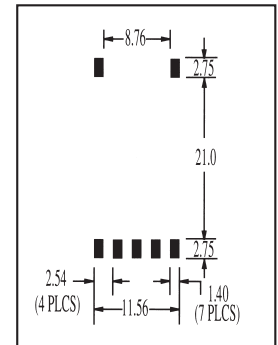
Mechanical F



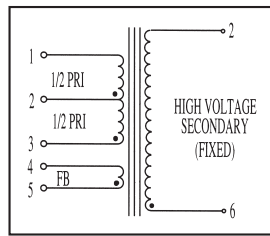
Pad Layout E



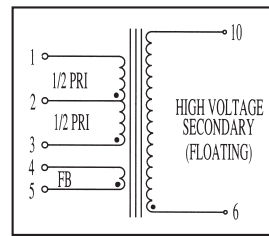
Pad Layout C



Schematic D



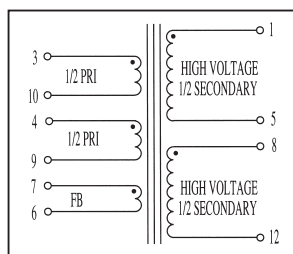
Schematic C



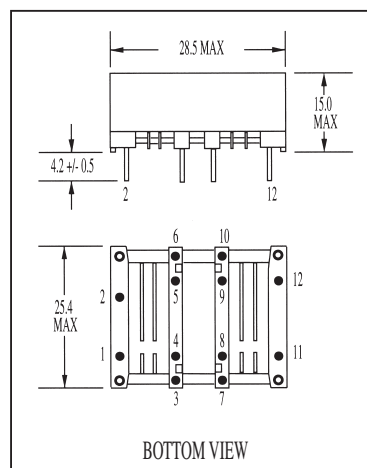
Dimensions are in millimeters

14 Watt Versions

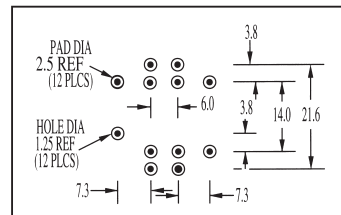
Schematic E



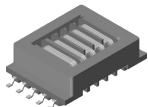
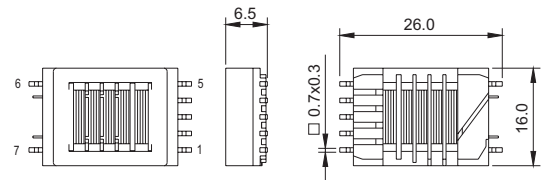
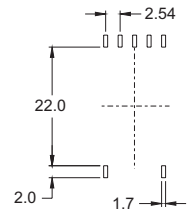
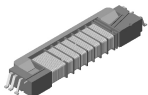
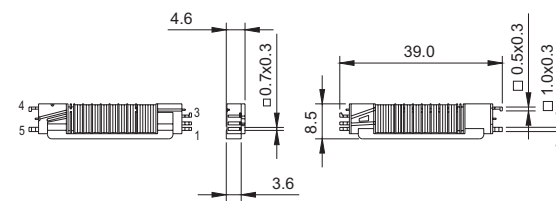
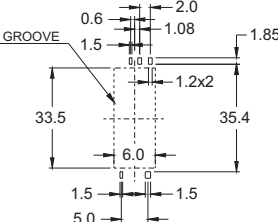
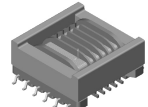
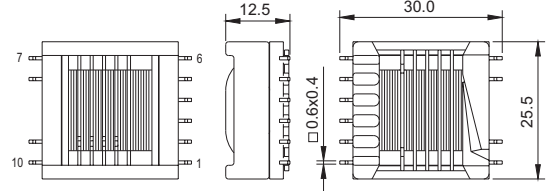
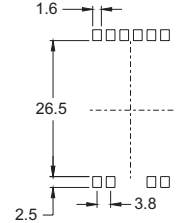
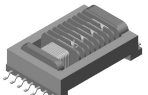
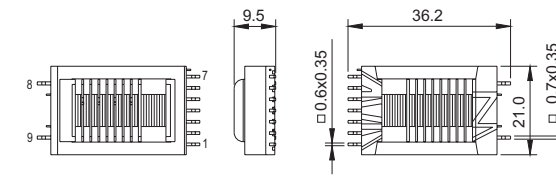
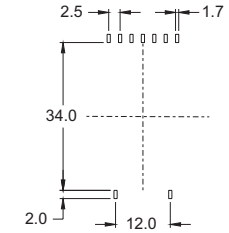
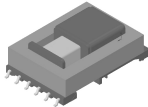
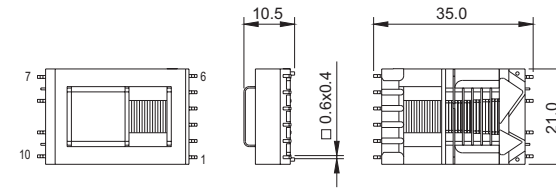
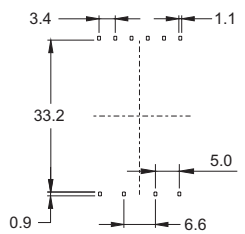
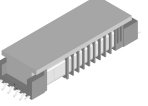
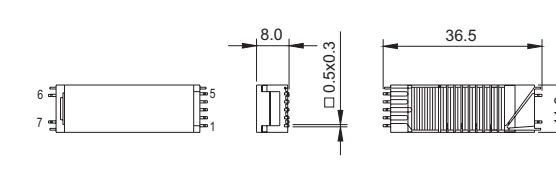
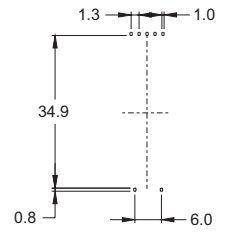
Mechanical G



Pad Layout F



Dimensions are in millimeters

Type	Dimensions: UNIT : mm	Recommand Pad	Specifications
CIS013 (EFD15) 			MAX.LAMP WATTANG :6W MAX.OPEN VOLTAGE :1600(Vrms)
CIS014 (CI8.5) 			MAX.LAMP WATTANG :6W MAX.OPEN VOLTAGE :1600(Vrms)
CIS015 (EPC25) 			MAX.LAMP WATTANG :20W MAX.OPEN VOLTAGE :1400(Vrms)
CIS016 (EEL19) 			MAX.LAMP WATTANG :15W MAX.OPEN VOLTAGE :1800(Vrms)
CIS017 (EEL19) 			MAX.LAMP WATTANG :15W MAX.OPEN VOLTAGE :2000(Vrms)
CIS018 (CI10/29) 			MAX.LAMP WATTANG :10W MAX.OPEN VOLTAGE :2000(Vrms)

UI8.3 SERIES

SPEC.&APPLICATIONS

*Operational Freq:40~200KHzMax

*Open Voltage:1300VrmsMax

*Max.lamp Wattage:3.0W

Applications:LCD MONITOR.

NOTEBOOK. LCD TV etc.

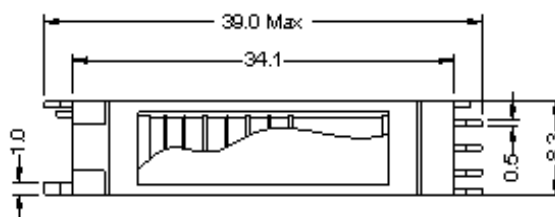
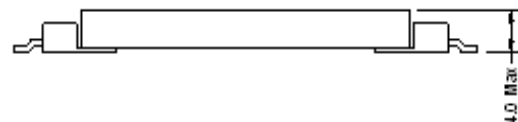


ORDERING CODE

IKP — UI8.3 WWYY
 (1) (2) (3)

- (1) Corp name
- (2) Type
- (3) Production cycle

Shape and Dimensions



Test Equipment

HP-4284A/CH-19053/CH-3250/CH-502C/CH-310&CH-1062 etc.

This specification might be changed without notice due to under developing and improving. Please contact us for our mass production schedule.Thank you for your understanding.

UI8.5 SERIES

SPEC.&APPLICATIONS

*Operational Freq:40~200KHzMax

*Open Voltage:1300VrmsMax

*Max.lamp Wattage:3.0W

Applications:LCD MONITOR.

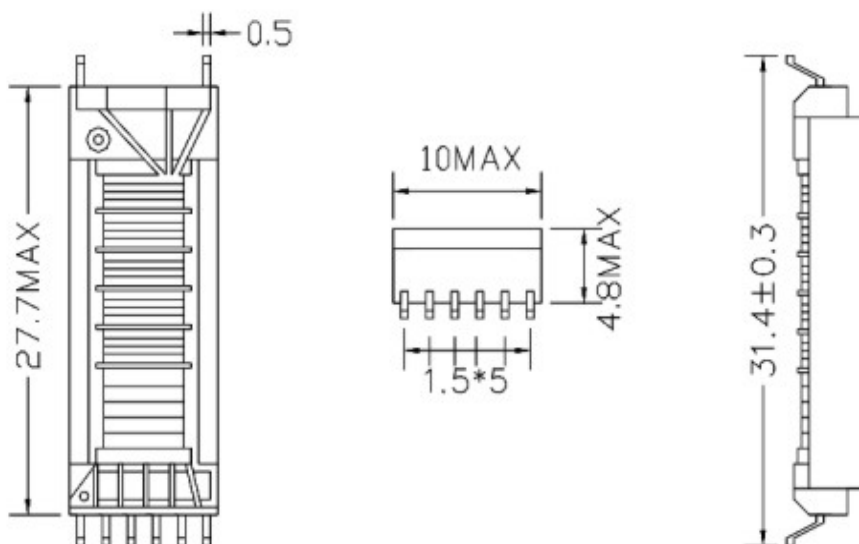
NOTEBOOK. LCD TV etc.



ORDERING CODE

<u>IKP</u>	—	<u>UI8.5</u>	<u>WWYY</u>	(1) Corp name
(1)		(2)	(3)	(2) Type
				(3) Production cycle

Shape and Dimensions



Test Equipment

HP-4284A/CH-19053/CH-3250/CH-502C/CH-310&CH-1062 etc.

This specification might be changed without notice due to under developing and improving. Please contact us for our mass production schedule.Thank you for your understanding.

UI9.0 SERIES

SPEC.&APPLICATIONS

*Operational Freq:40~200KHzMax

*Open Voltage:1400VrmsMax

*Max.lamp Wattage:3.5W

Applications:LCD MONITOR.

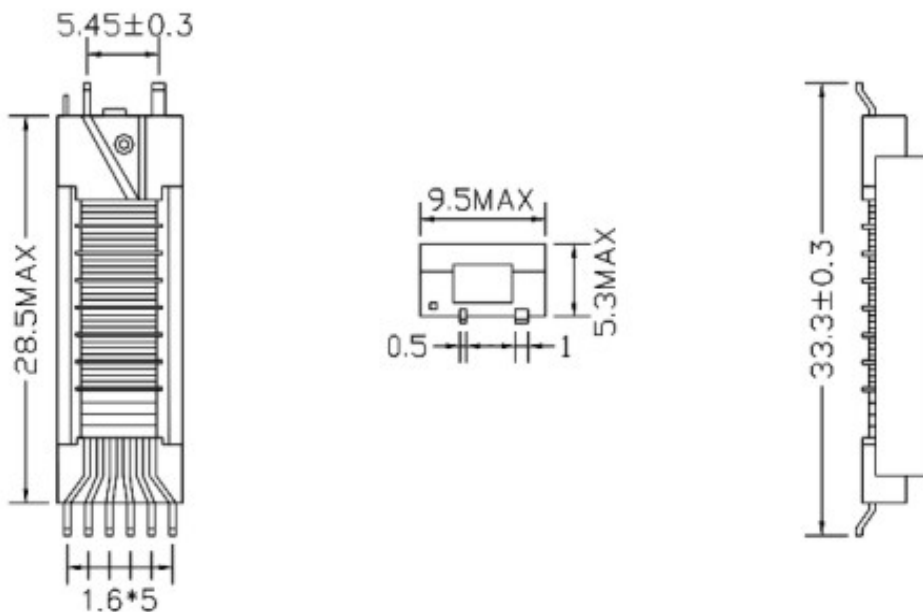
NOTEBOOK. LCD TV etc.



ORDERING CODE

<u>IKP</u>	—	<u>UI9.0</u>	<u>WWYY</u>	(1) Corp name
(1)		(2)	(3)	(2) Type
				(3) Production cycle

Shape and Dimensions



Test Equipment

HP-4284A/CH-19053/CH-3250/CH-502C/CH-310&CH-1062 etc.

This specification might be changed without notice due to under developing and improving. Please contact us for our mass production schedule.Thank you for your understanding.

UI9.8 SERIES

SPEC.&APPLICATIONS

*Operational Freq:40~200KHzMax

*Open Voltage:1600VrmsMax

*Max.lamp Wattage:4.0W

Applications:LCD MONITOR.

NOTEBOOK. LCD TV etc.

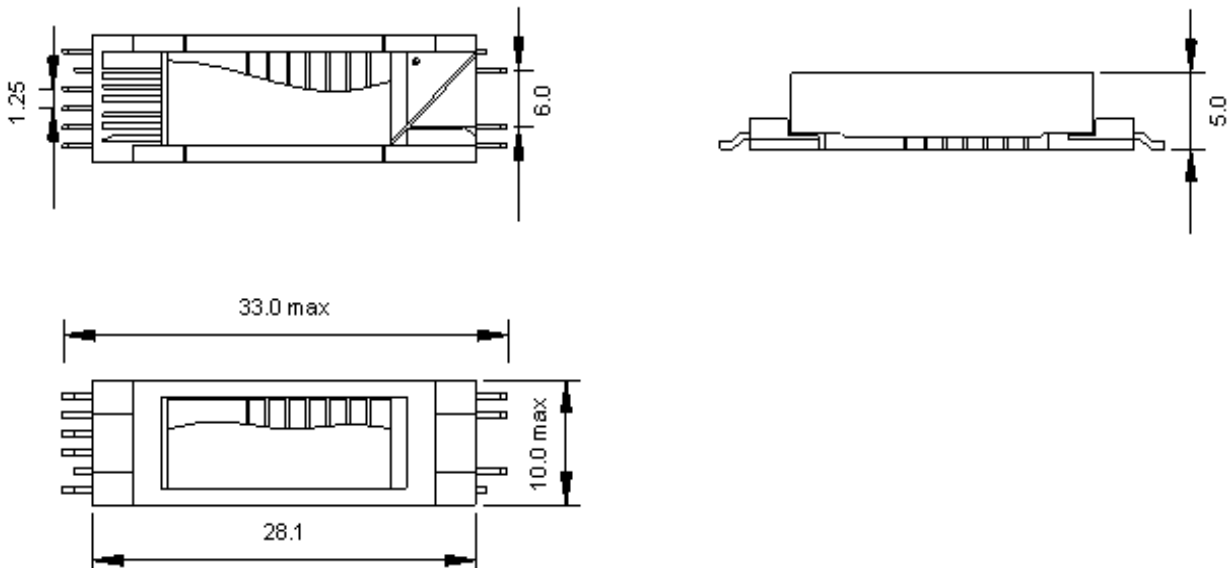


ORDERING CODE

<u>IKP</u>	—	<u>UI9.8</u>	<u>WWYY</u>
(1)		(2)	(3)

- (1) Corp name
- (2) Type
- (3) Production cycle

Shape and Dimensions



Test Equipment

HP-4284A/CH-19053/CH-3250/CH-502C/CH-310&CH-1062 etc.

This specification might be changed without notice due to under developing and improving. Please contact us for our mass production schedule.Thank you for your understanding.

UI11.7 SERIES

SPEC.&APPLICATIONS

*Operational Freq:40~200KHzMax

*Open Voltage:1700VrmsMax

*Max.lamp Wattage:4.5W

Applications:LCD MONITOR.

NOTEBOOK. LCD TV etc.

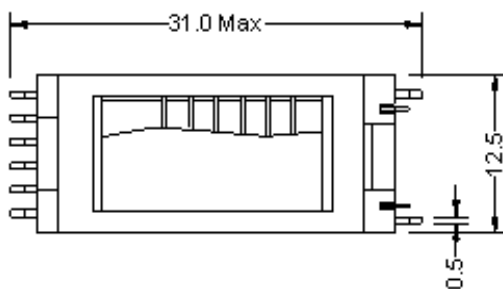
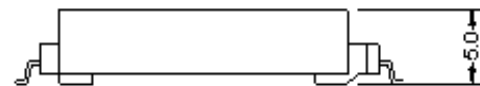
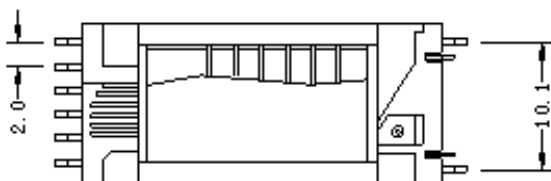


ORDERING CODE

IKP — UI11.7 WWYY
 (1) (2) (3)

- (1) Corp name
- (2) Type
- (3) Production cycle

Shape and Dimensions



Test Equipment

HP-4284A/CH-19053/CH-3250/CH-502C/CH-310&CH-1062 etc.

This specification might be changed without notice due to under developing and improving. Please contact us for our mass production schedule.Thank you for your understanding.

UI15 SERIES

SPEC.&APPLICATIONS

*Operational Freq:40~200KHzMax

*Open Voltage:1800VrmsMax

*Max.lamp Wattage:8.0W

Applications:LCD MONITOR.

NOTEBOOK. LCD TV etc.

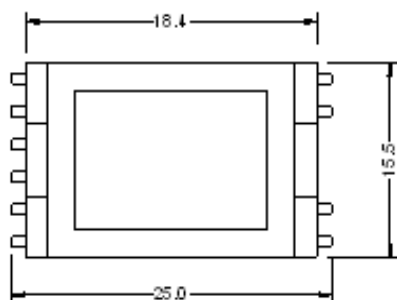
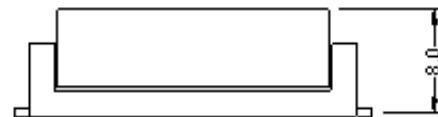
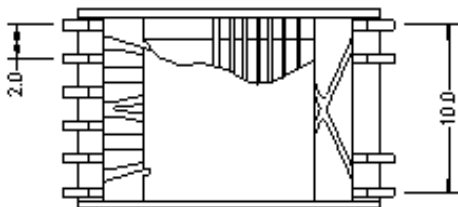


ORDERING CODE

<u>IKP</u>	—	<u>UI15</u>	<u>WWYY</u>
(1)		(2)	(3)

- (1) Corp name
- (2) Type
- (3) Production cycle

Shape and Dimensions



Test Equipment

HP-4284A/CH-19053/CH-3250/CH-502C/CH-310&CH-1062 etc.

This specification might be changed without notice due to under developing and improving. Please contact us for our mass production schedule. Thank you for your understanding.

CI8.3 SERIES

SPEC.&APPLICATIONS

*Operational Freq:40~200KHzMax

*Open Voltage:1600VrmsMax

*Max.lamp Wattage:4.0W

Applications:LCD MONITOR.

NOTEBOOK. LCD TV etc.

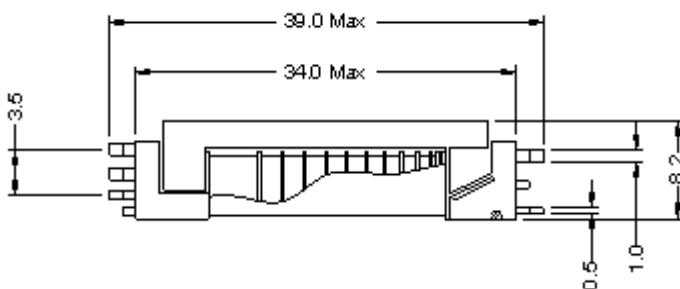
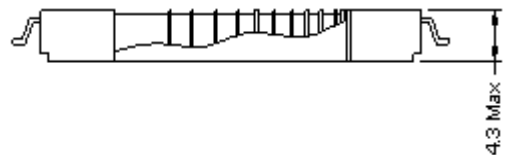


ORDERING CODE

IKP — CI8.3 WWYY
(1) (2) (3)

- (1) Corp name
- (2) Type
- (3) Production cycle

Shape and Dimensions



Test Equipment

HP-4284A/CH-19053/CH-3250/CH-502C/CH-310&CH-1062 etc.

This specification might be changed without notice due to under developing and improving. Please contact us for our mass production schedule. Thank you for your understanding.

CI8.5 SERIES

SPEC.&APPLICATIONS

*Operational Freq:40~200KHzMax

*Open Voltage:1600VrmsMax

*Max.lamp Wattage:4.5W

Applications:LCD MONITOR.

NOTEBOOK. LCD TV etc.

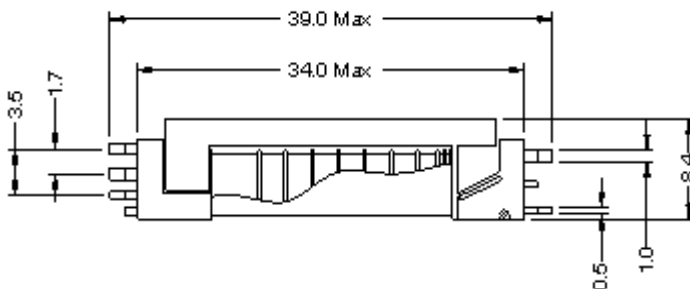
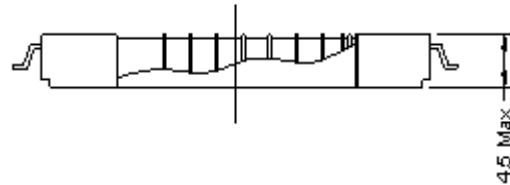
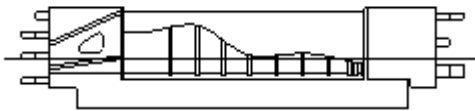


ORDERING CODE

<u>IKP</u>	—	<u>CI8.5</u>	<u>WWYY</u>
(1)		(2)	(3)

- (1) Corp name
- (2) Type
- (3) Production cycle

Shape and Dimensions



Test Equipment

HP-4284A/CH-19053/CH-3250/CH-502C/CH-310&CH-1062 etc.

This specification might be changed without notice due to under developing and improving. Please contact us for our mass production schedule. Thank you for your understanding.

EE8.3 SERIES

SPEC.&APPLICATIONS

*Operational Freq:40~200KHzMax

*Open Voltage:200VrmsMax

*Max.lamp Wattage:1.0W

Applications:LCD MONITOR.

NOTEBOOK. LCD TV etc.

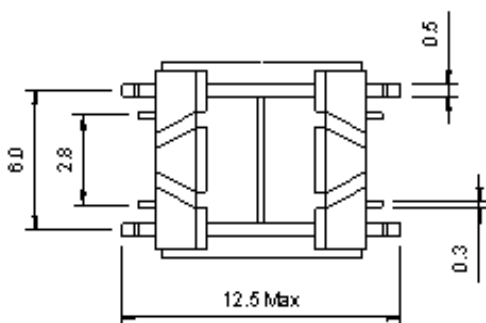
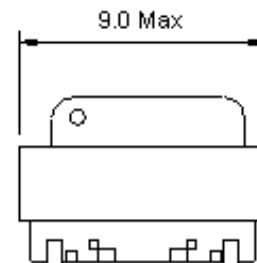
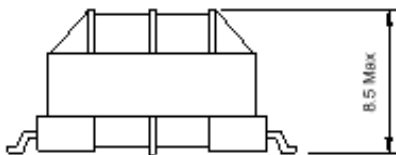


ORDERING CODE

IKP — EE8.3 WWYY
(1) (2) (3)

- (1) Corp name
- (2) Type
- (3) Production cycle

Shape and Dimensions



Test Equipment

HP-4284A/CH-19053/CH-3250/CH-502C/CH-310&CH-1062 etc.

This specification might be changed without notice due to under developing and improving. Please contact us for our mass production schedule.Thank you for your understanding.

EEA17 SERIES

SPEC.&APPLICATIONS

*Operational Freq:40~200KHzMax

*Open Voltage:2600VrmsMax

*Max.lamp Wattage:15.0W

Applications:LCD MONITOR.

NOTEBOOK. LCD TV etc.

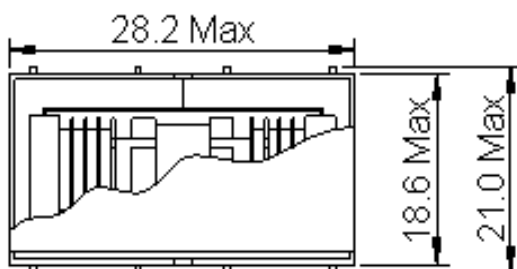
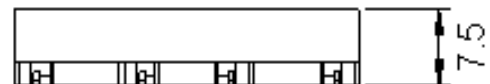
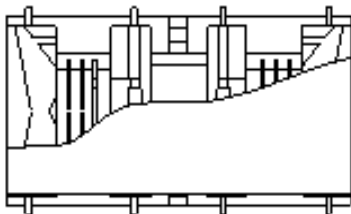


ORDERING CODE

IKP — EEA17 WWYY
 (1) (2) (3)

- (1) Corp name
- (2) Type
- (3) Production cycle

Shape and Dimensions



Test Equipment

HP-4284A/CH-19053/CH-3250/CH-502C/CH-310&CH-1062 etc.

This specification might be changed without notice due to under developing and improving. Please contact us for our mass production schedule.Thank you for your understanding.

EFD20 SERIES

SPEC.&APPLICATIONS

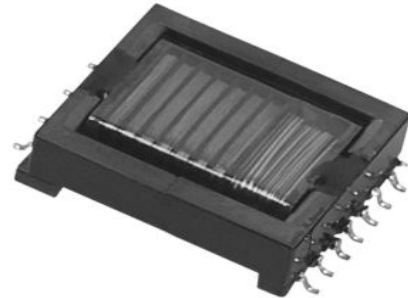
*Operational Freq:40~200KHzMax

*Open Voltage:2000VrmsMax

*Max.lamp Wattage:12.0W

Applications:LCD MONITOR.

NOTEBOOK. LCD TV etc.

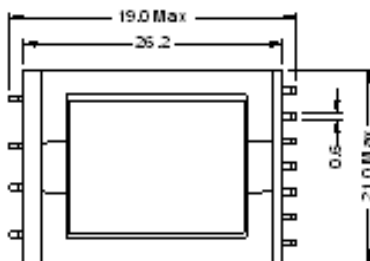
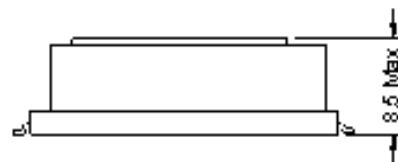
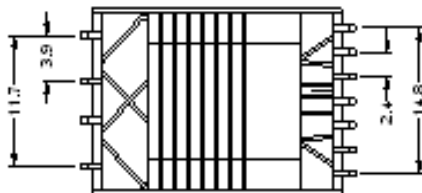


ORDERING CODE

IKP — EFD20 WWYY
 (1) (2) (3)

- (1) Corp name
- (2) Type
- (3) Production cycle

Shape and Dimensions



Test Equipment

HP-4284A/CH-19053/CH-3250/CH-502C/CH-310&CH-1062 etc.

This specification might be changed without notice due to under developing and improving. Please contact us for our mass production schedule.Thank you for your understanding.

EFD15 SERIES

SPEC.&APPLICATIONS

*Operational Freq:40~200KHzMax

*Open Voltage:1400VrmsMax

*Max.lamp Wattage:5.0W

Applications:LCD MONITOR.

NOTEBOOK. LCD TV etc.

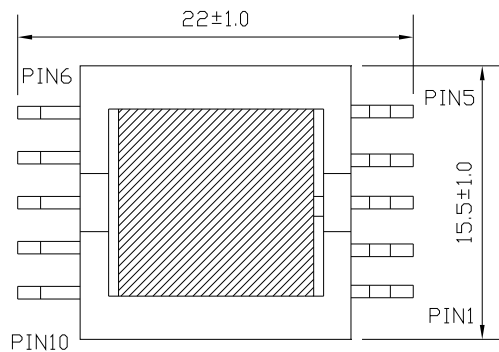


ORDERING CODE

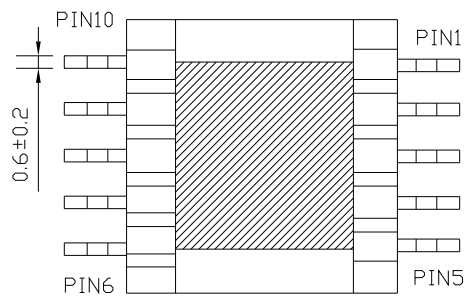
IKP — EFD15 WWYY
(1) (2) (3)

- (1) Corp name
- (2) Type
- (3) Production cycle

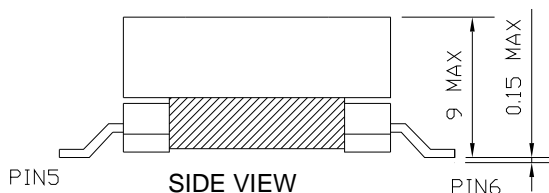
Shape and Dimensions



TOP VIEW



BOTTOM VIEW



SIDE VIEW

Test Equipment

HP-4284A/CH-19053/CH-3250/CH-502C/CH-310&CH-1062 etc.

This specification might be changed without notice due to under developing and improving. Please contact us for our mass production schedule.Thank you for your understanding.